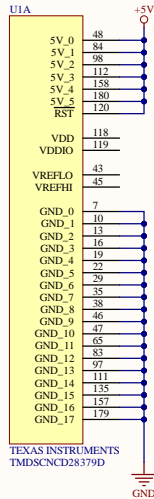


**POWER**



## U1B



## UID



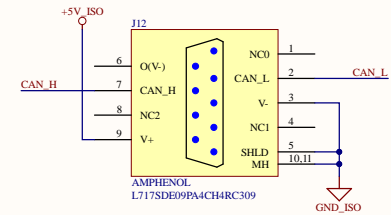
## U1F



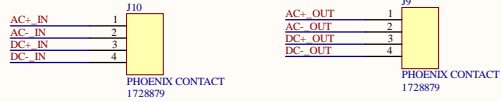
## U1E



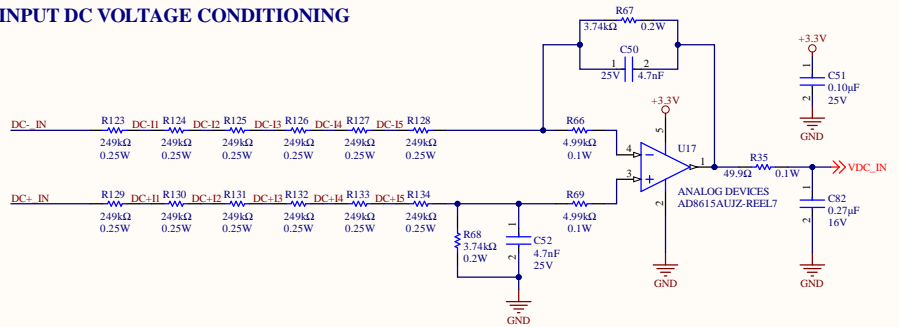
## COMMUNICATION



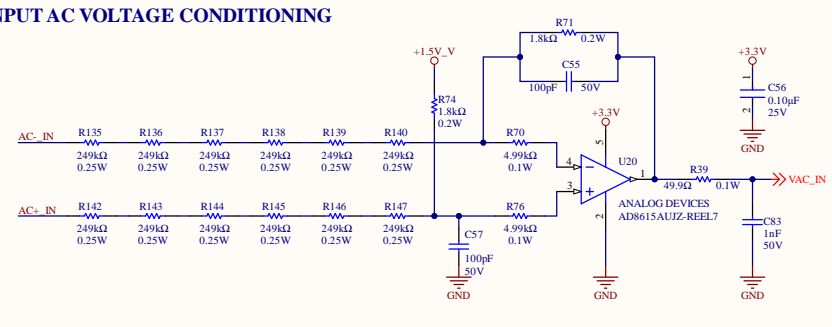
## VOLTAGE SENSE CONNECTORS



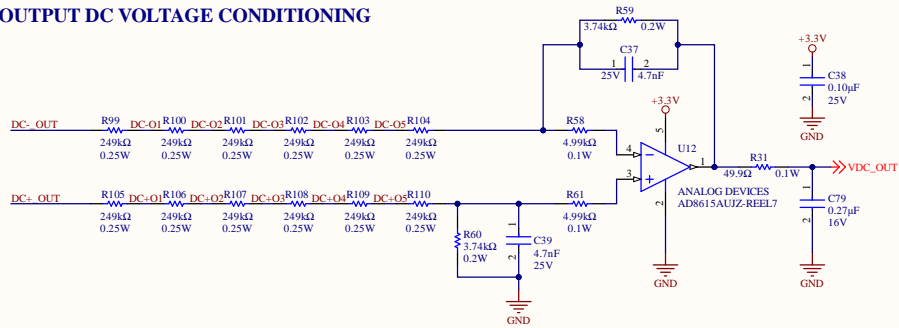
## INPUT DC VOLTAGE CONDITIONING



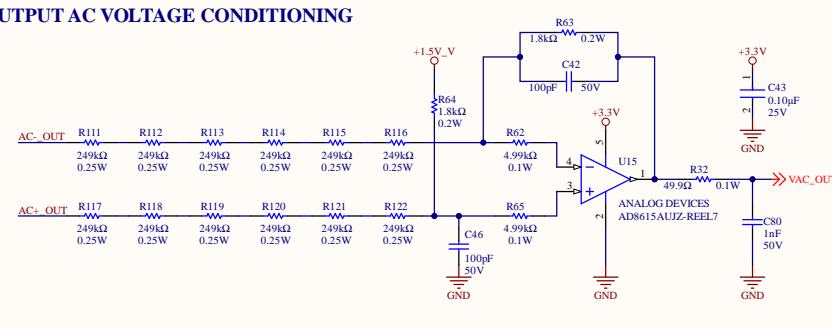
## INPUT AC VOLTAGE CONDITIONING



## OUTPUT DC VOLTAGE CONDITIONING



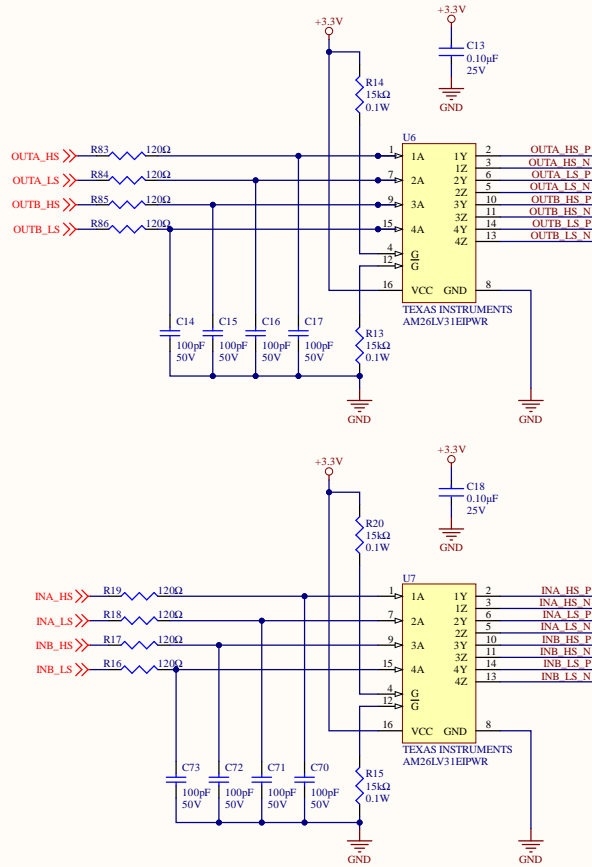
## OUTPUT AC VOLTAGE CONDITIONING



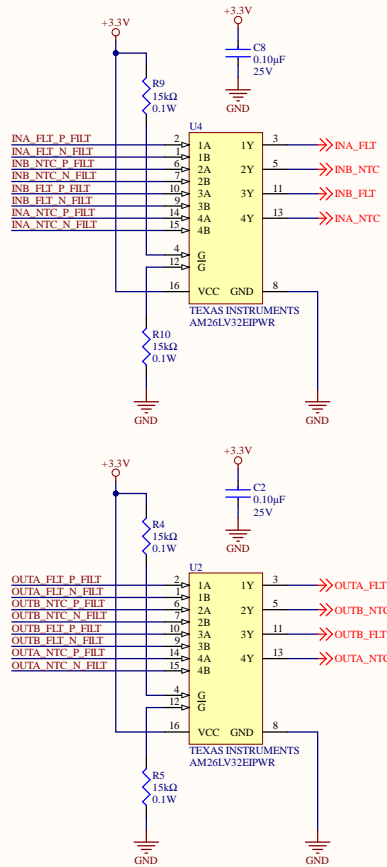
[No Variations]

Title:	60KW GMA DAB (CONTROL) - VOLTAGE SENSE				
Drawing No:	CRD60DD12N-GMA-CONTROL				
Date:	11/2023	Size:	B	Revision:	1.0
Sheet:	2	d	5		

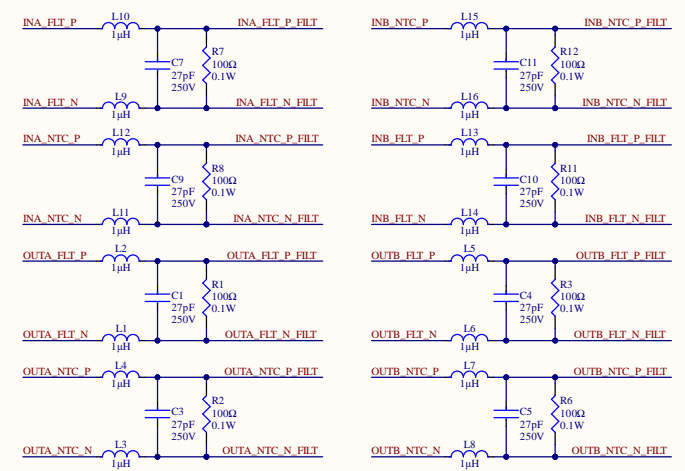
## DIFFERENTIAL TRANSCIEVERS



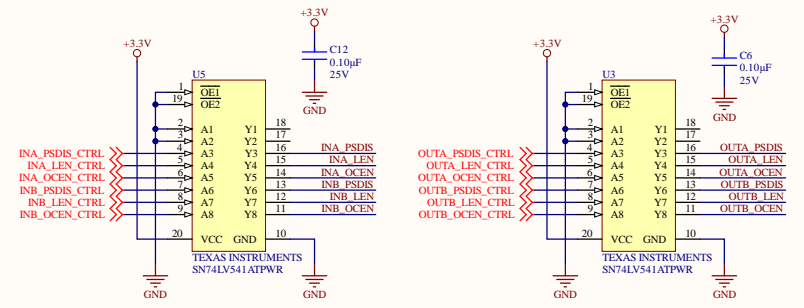
## IC RECEIVER



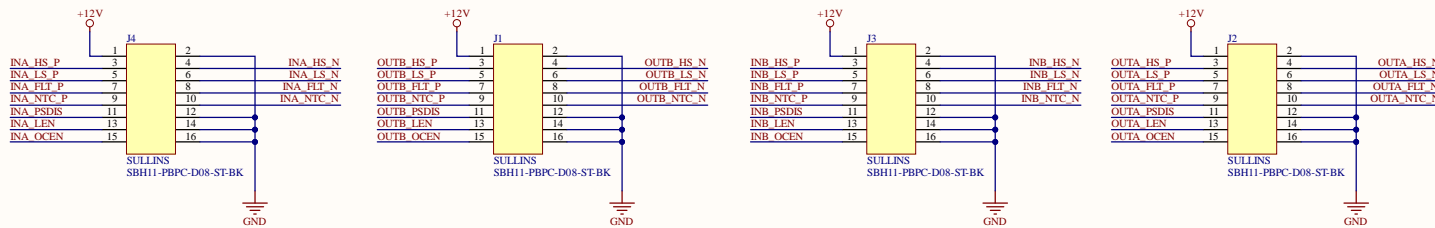
## FILTER



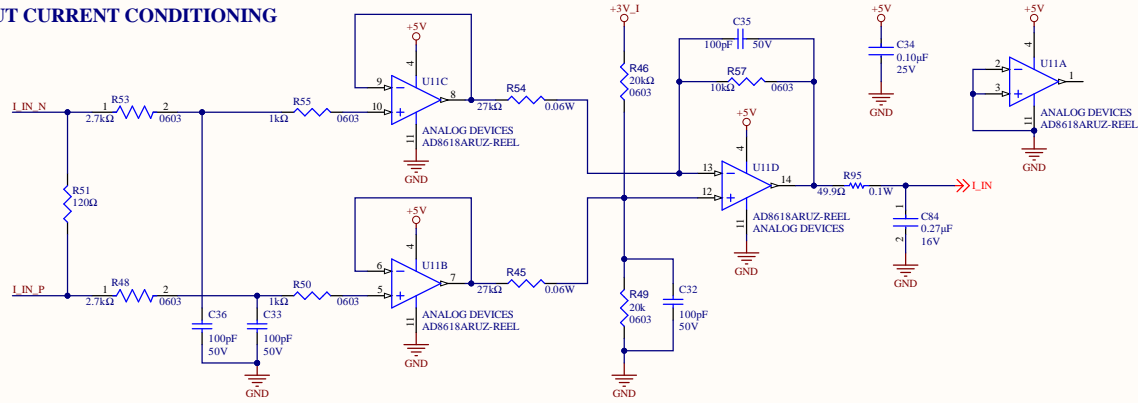
## BUFFER



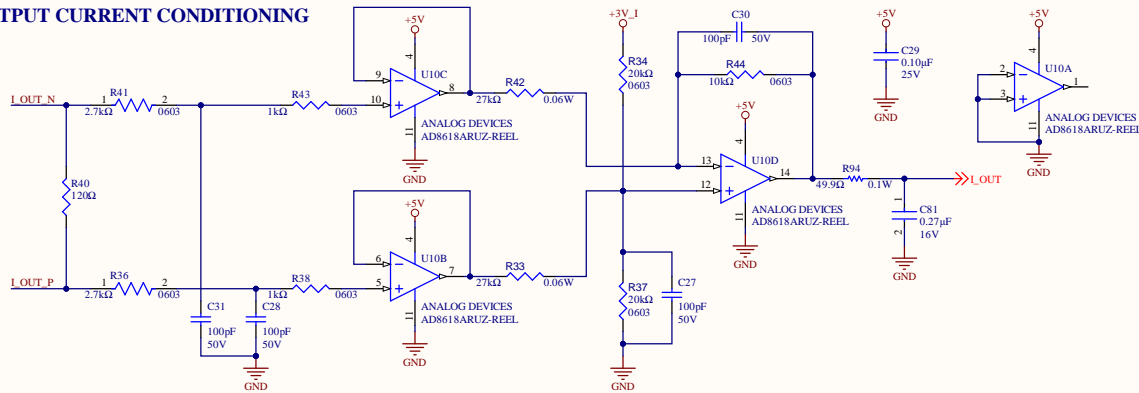
## GATE DRIVER CONNECTIONS



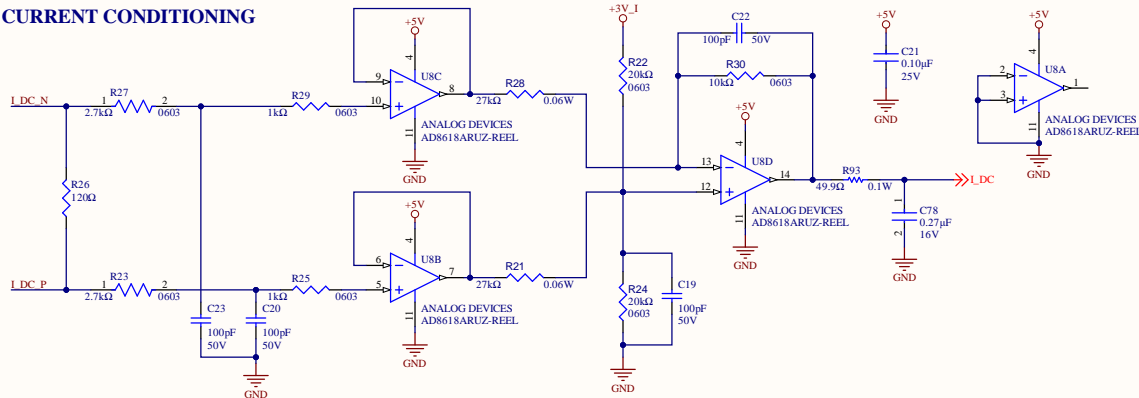
## INPUT CURRENT CONDITIONING



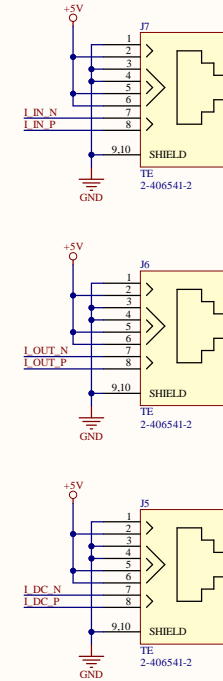
## OUTPUT CURRENT CONDITIONING




## DC CURRENT CONDITIONING

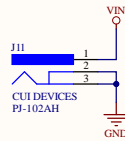


## SENSOR FEEDBACK

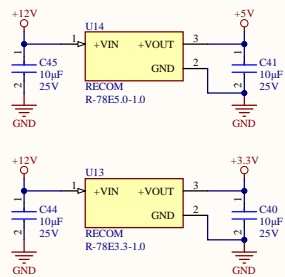


		[No Variations]	
Title: 60KW GMA DAB (CONTROL) - CURRENT SENSE			
Drawing No: CRD60DD12N-GMA-CONTROL			
Date: 11/2023	Size: B	Revision: 1.0	Sheet: 4 of 5

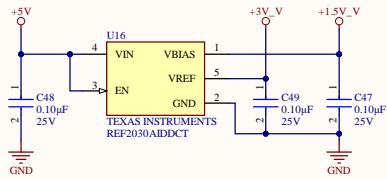
## INPUT POWER



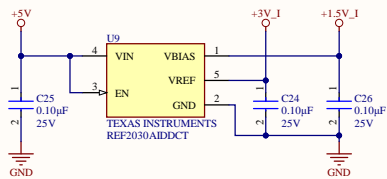
## +3.3V AND +5V RAILS



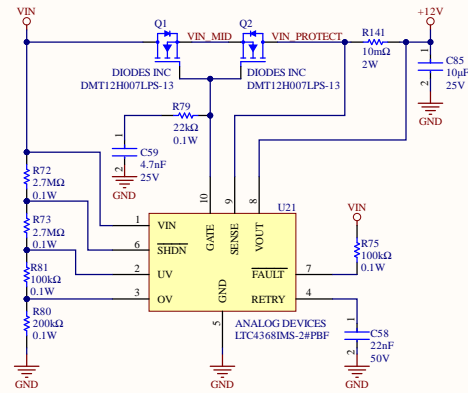
## VOLTAGE REFERENCE RAILS



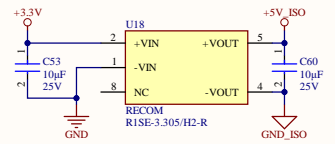
## CURRENT REFERENCE RAILS



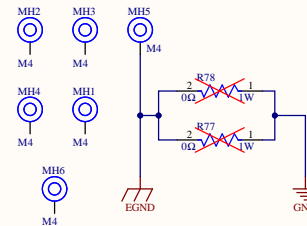
## INPUT POWER CONDITIONING



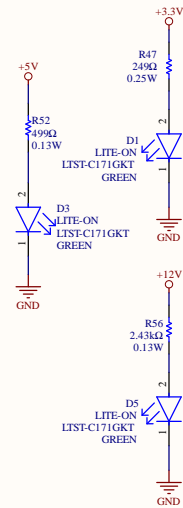
## CAN ISOLATED +5V RAIL



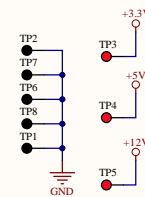
## MOUNTING HOLES



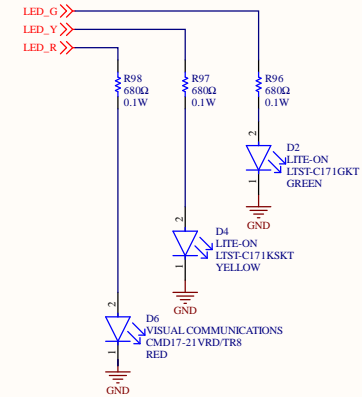
## STATUS LEDS



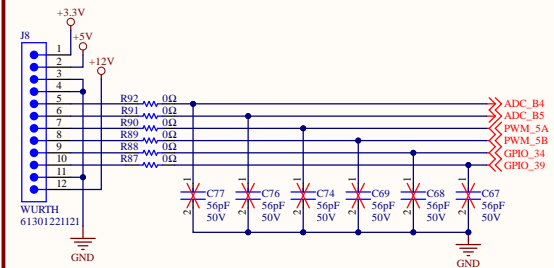
## TEST POINTS



## PROGRAMMABLE LEDS



## SPARE INPUTS/OUTPUTS



**Wolfspeed**

[No Variations]

Title: 60KW GMA DAB (CONTROL) - AUXILIARY POWER

Drawing No: CRD60DD12N-GMA-CONTROL

Date: 11/2023

Size: B

Revision: 1.0

Sheet 5 of 5