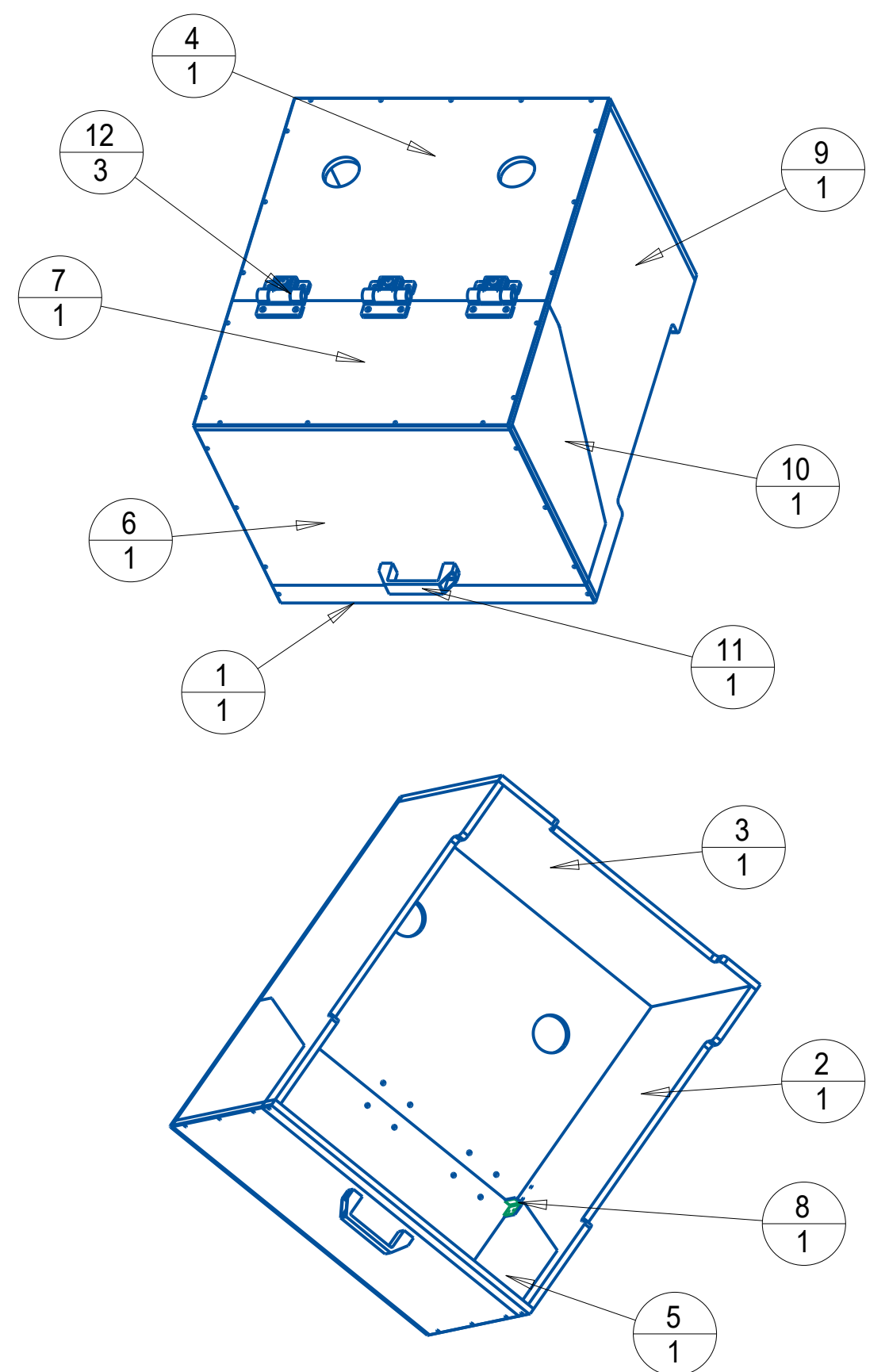
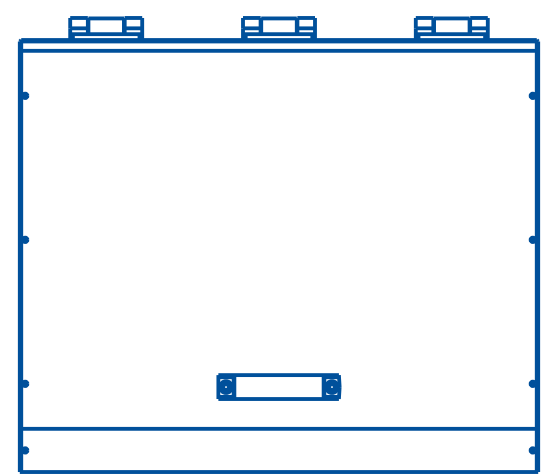
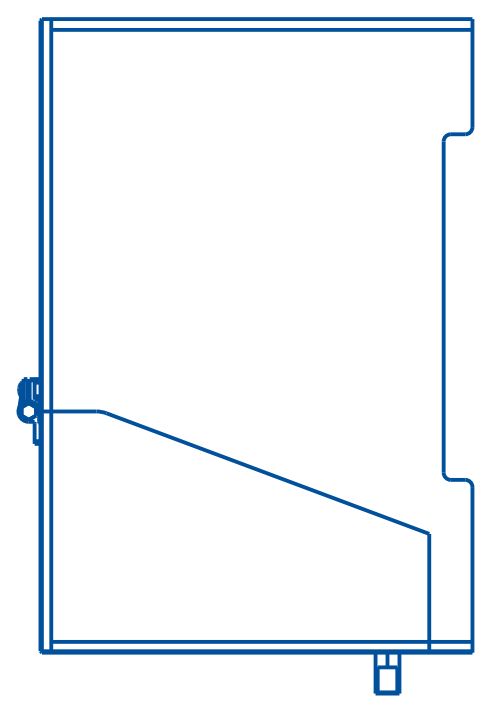
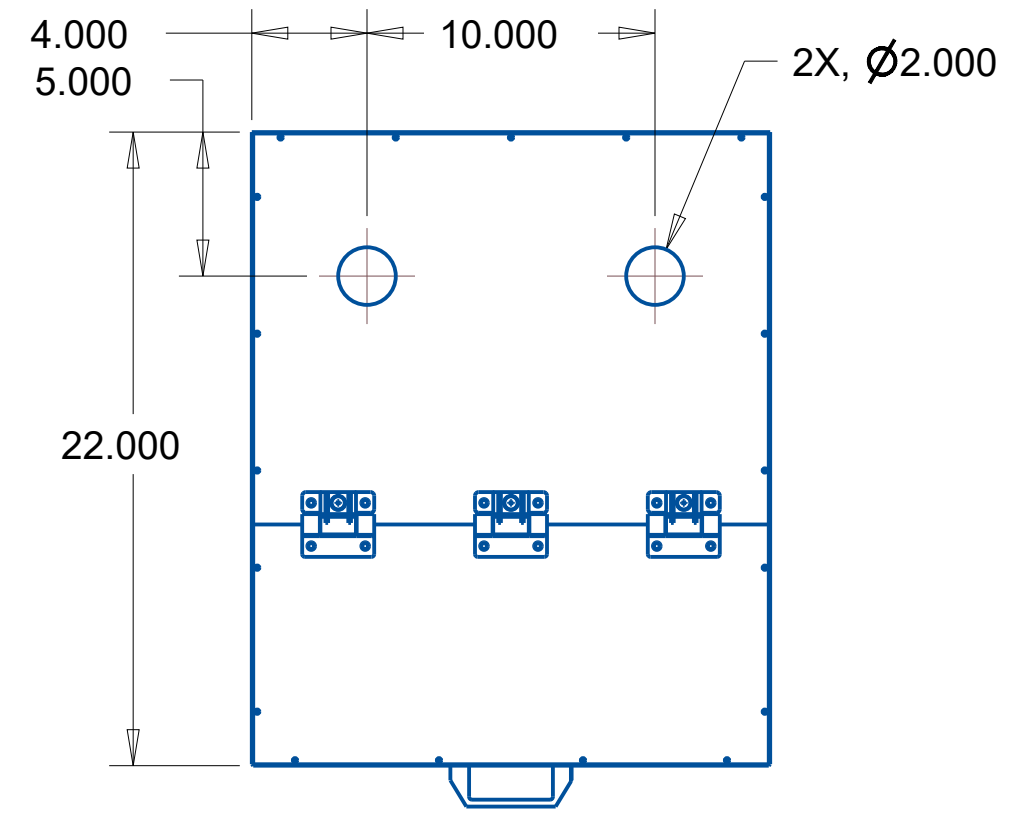
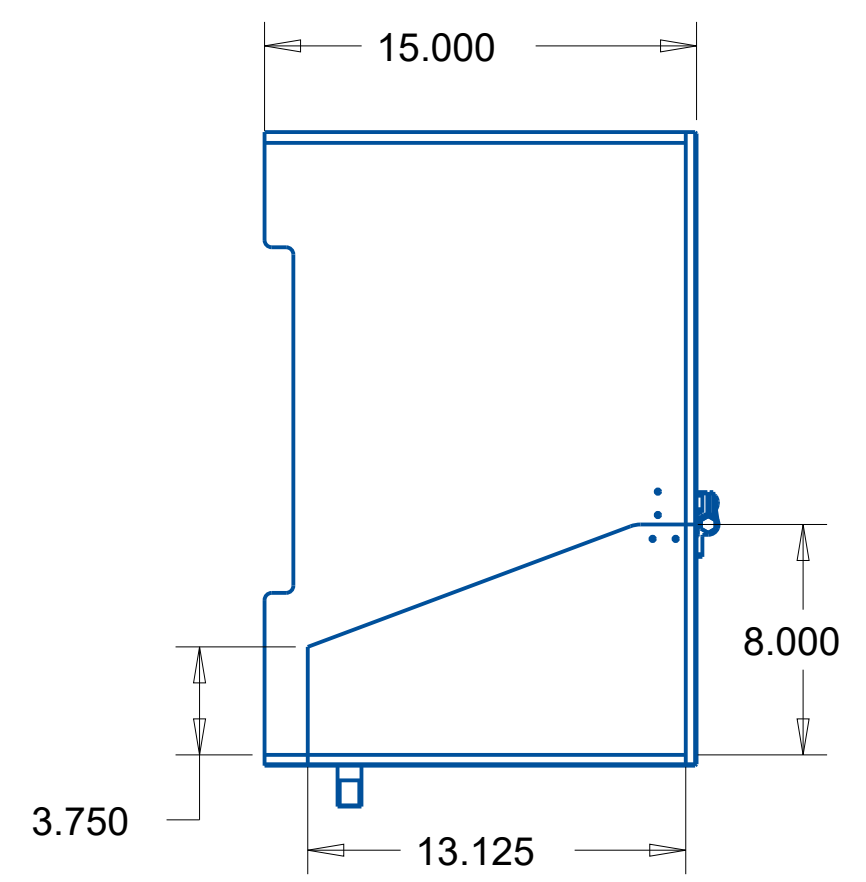
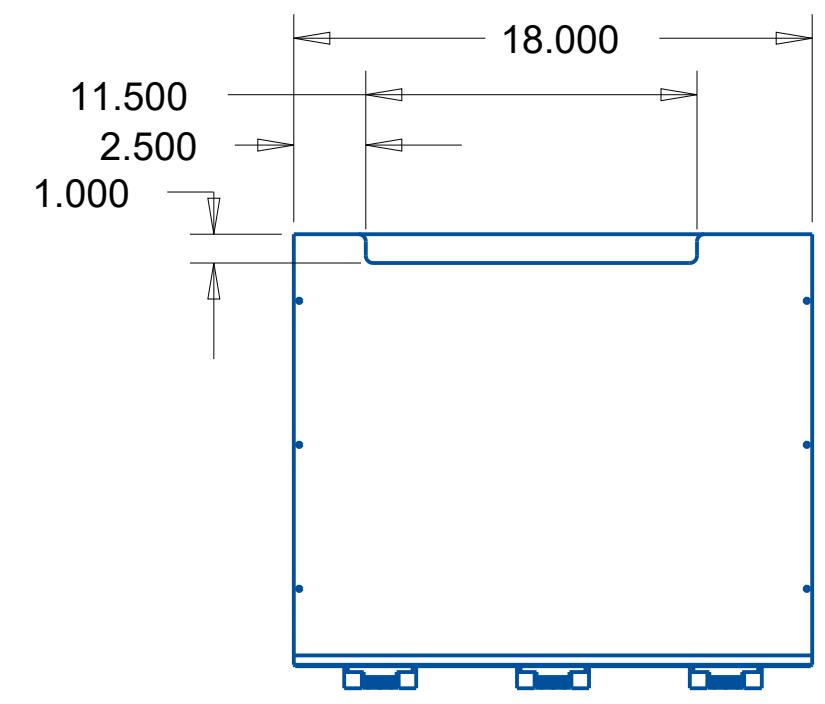


NOTICE
 CREE CONFIDENTIAL. THIS PLOT AND THE INFORMATION CONTAINED WITHIN ARE THE PROPRIETARY AND CONFIDENTIAL INFORMATION OF CREE, INC. THIS PLOT MAY NOT BE COPIED, REPRODUCED OR DISCLOSED TO ANY UNAUTHORIZED PERSON WITHOUT THE WRITTEN CONSENT OF CREE INC.

INDEX	QTY	ITEM	COMMENTS
1	1	11001149_CP01	FRONT, BOTTOM
2	1	11001149_CP02	LEFT/RIGHT, BACK
3	1	11001149_CP03	BACK
4	1	11001149_CP04	TOP, BACK
5	1	11001149_CP05	LEFT/RIGHT, FRONT
6	1	11001149_CP06	FRONT, TOP
7	1	11001149_CP07	TOP, FRONT
8	1	11001149_CP08	BRACKET/W SS MATERIAL
9	1	11001149_CP09	LEFT/RIGHT, BACK
10	1	11001149_CP10	LEFT/RIGHT, FRONT
11	1	82504713_MSC	LIFT HANDLE - MSC DIRECT
12	3	1791A480_MSC	HINGER



REVISIONS				
REV	DESCRIPTION	BY	DATE	APP'D
A	INITIAL RELEASE	S.H	12/6/18	J.R
B	ADDED ITEM#08, AND 2 HOLES ON ITEM 02&05.	S.H	3/13/19	J.R
C	CHANGED SLOT ON BACK AND ADDED SLOTS ON EACH SIDE	DC	7/28/20	JR

UNLESS OTHERWISE SPECIFIED DIMENSIONS ARE IN INCHES AND AFTER FINISH.
 TOLERANCE UNLESS SPECIFIED:
 .XX ± .01
 .XXX ± .005
 X° ± .5°
 FOR SHEET METAL PARTS ONLY
 .X ± .06
 .XX ± .03
 .XXX ± .010
 X° ± .5°
 SURFACE FINISH: 63

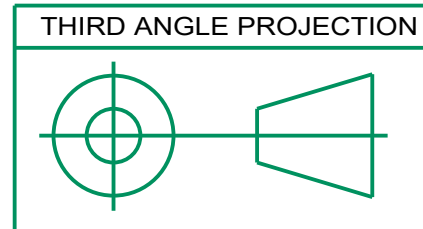
DRAWN BY S.HUANG	DATE 12/06/18
CHECK	DATE
APPROVED J.RICHMOND	DATE 12/6/18
MATERIAL LEXAN SS-ITEM#08	FINAL PROTECTIVE FINISH

CREE 4600 Silicon Drive
 Durham, N.C 27703
 Phone (919) 313-5300
 Fax (919) 313-5558

TITLE
ENCLOSURE-DYNAMIC TEST

SIZE **C** DRAWING NO. **11001149** REV. **C**

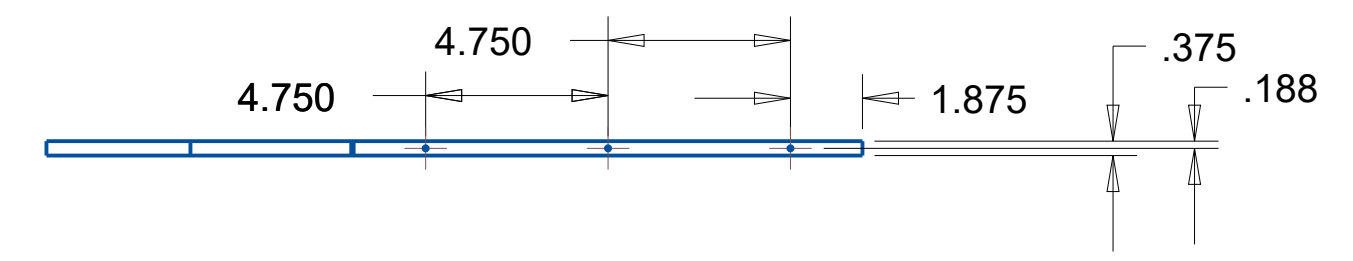
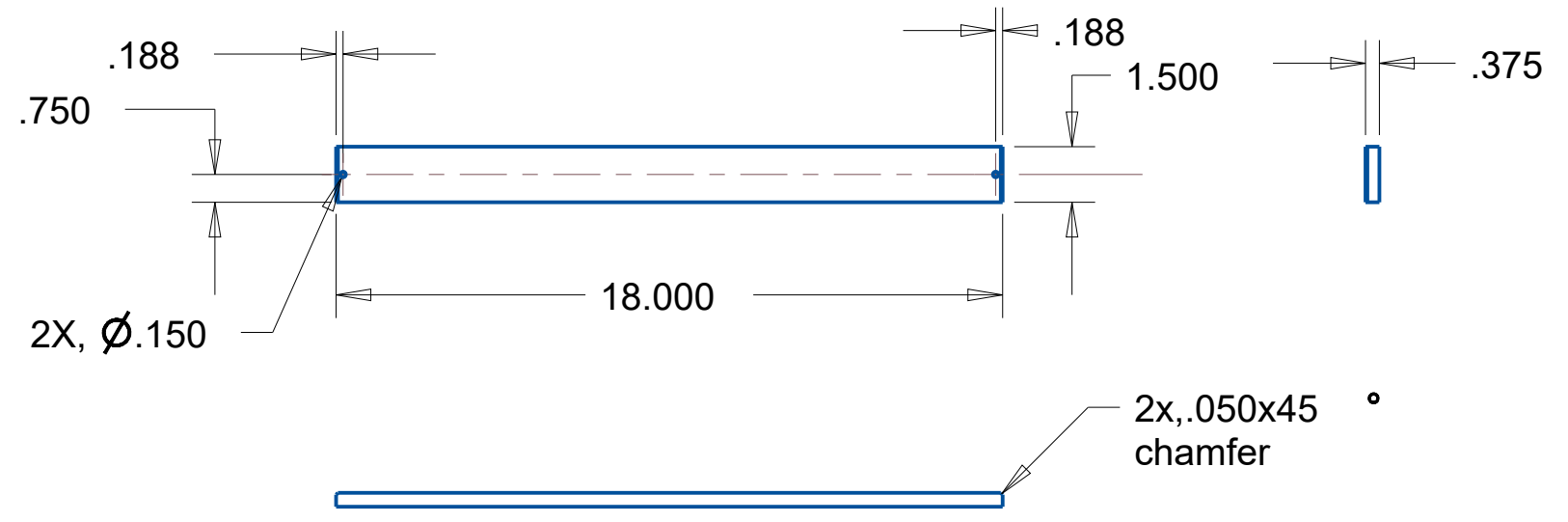
SCALE 0.125 SHEET OF 1/3



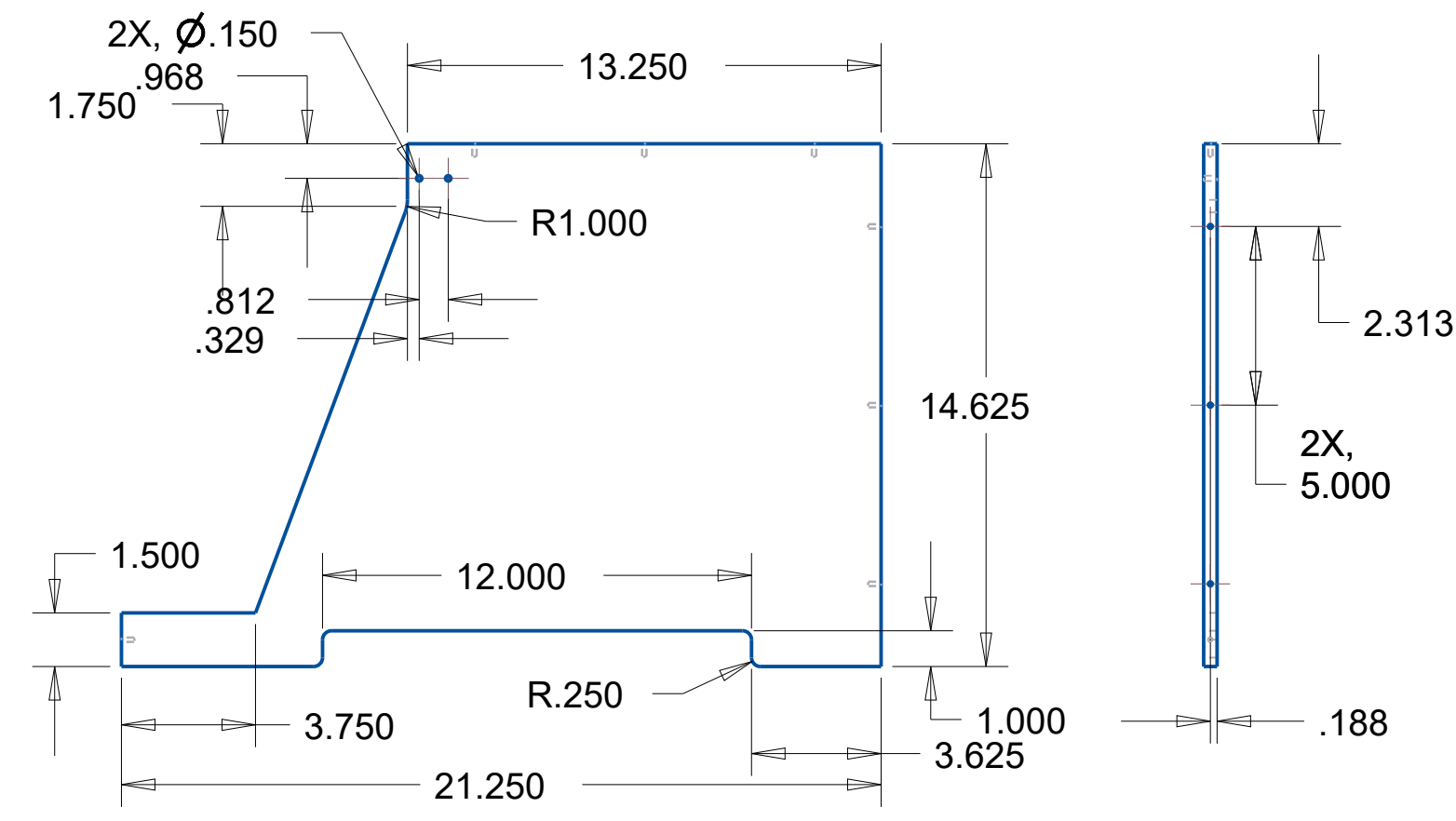
NOTICE
 CREE CONFIDENTIAL. THIS PLOT AND THE INFORMATION CONTAINED WITHIN ARE THE PROPRIETARY AND CONFIDENTIAL INFORMATION OF CREE, INC. THIS PLOT MAY NOT BE COPIED, REPRODUCED OR DISCLOSED TO ANY UNAUTHORIZED PERSON WITHOUT THE WRITTEN CONSENT OF CREE INC.

ITEM# 02
 SCALE 0.200
 (#09 IS SAME AS #02/WITHOUT 2X, Ø .15 HOLES)

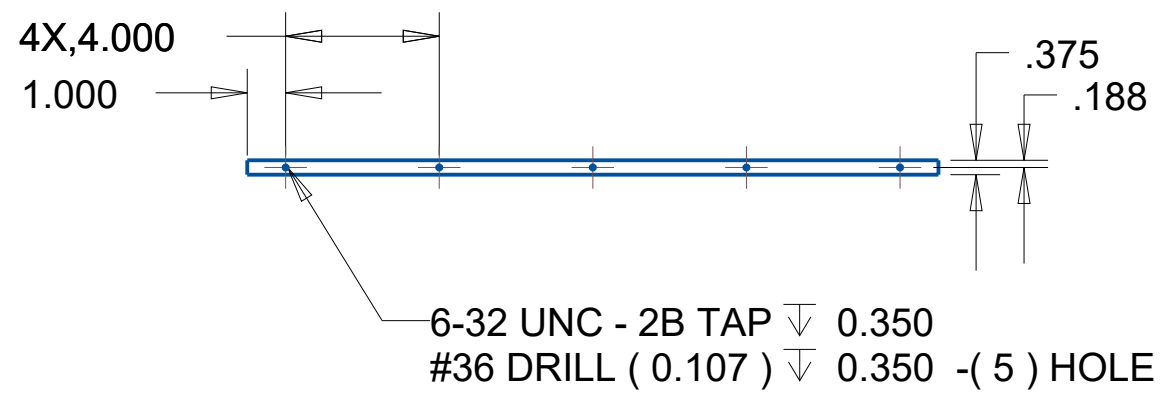
ITEM #01
 SCALE 0.200



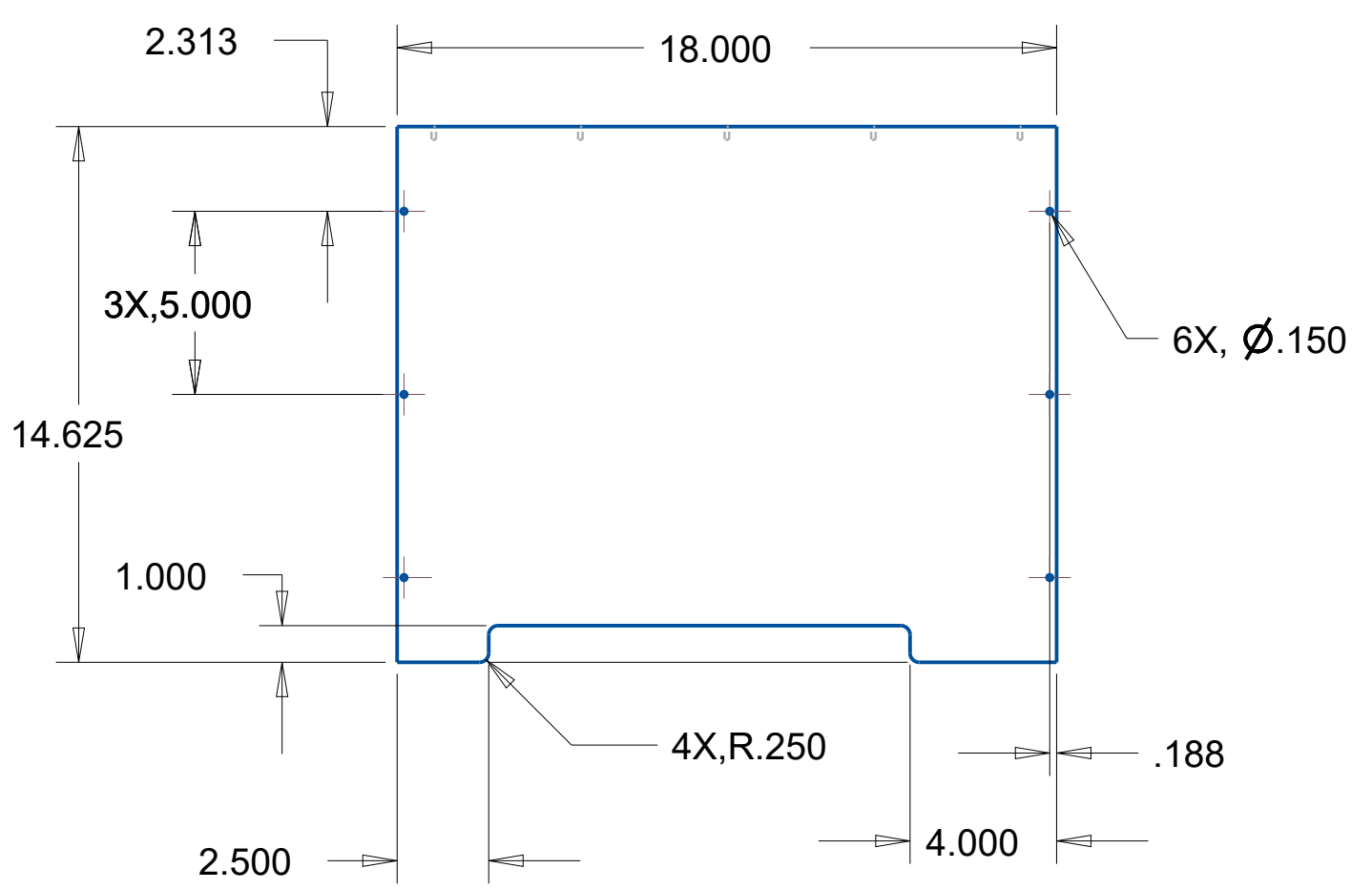
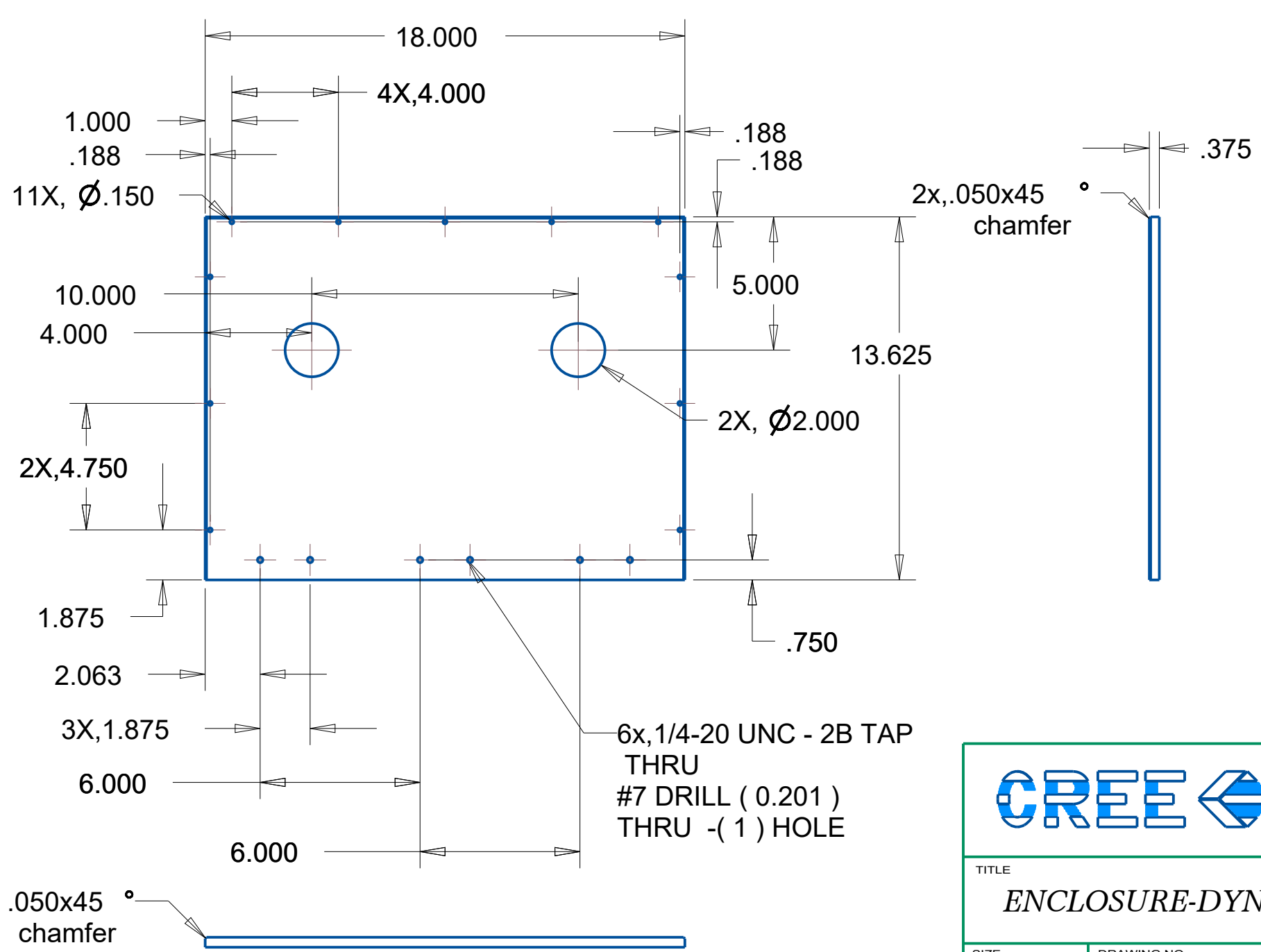
6-32 UNC - 2B TAP ∇ 0.350
 #36 DRILL (0.107) ∇ 0.350 - (1) HOLE



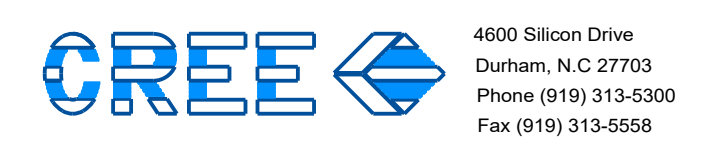
ITEM #03
 SCALE 0.200



ITEM #04
 SCALE 0.200



6x, 1/4-20 UNC - 2B TAP THRU
 #7 DRILL (0.201) THRU - (1) HOLE

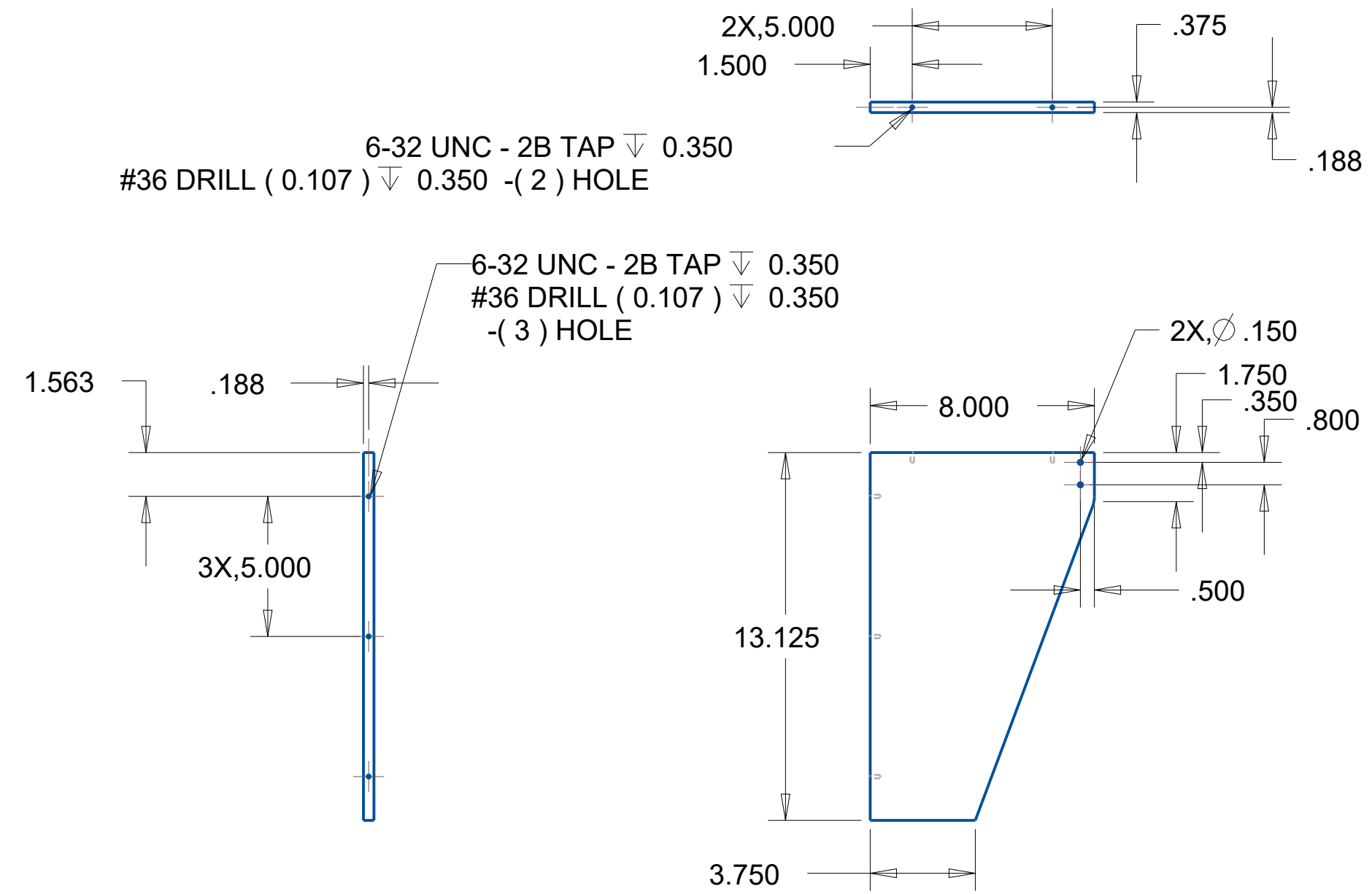


TITLE
ENCLOSURE-DYNAMIC TEST

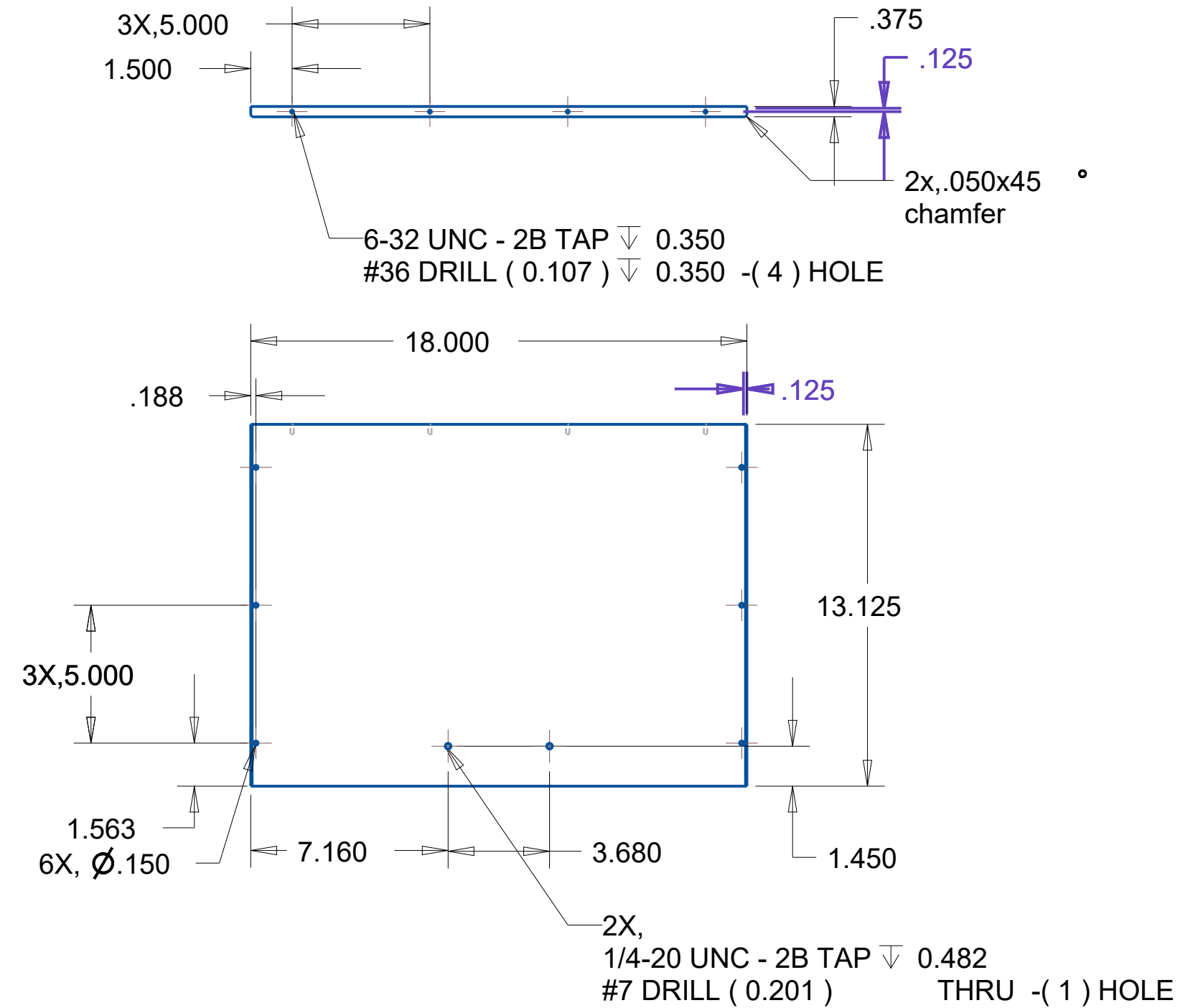
SIZE C	DRAWING NO. 11001149	REV. C
SCALE 0.125	SHEET OF	2/3

NOTICE
 CREE CONFIDENTIAL. THIS PLOT AND THE INFORMATION CONTAINED WITHIN ARE THE PROPRIETARY AND CONFIDENTIAL INFORMATION OF CREE, INC. THIS PLOT MAY NOT BE COPIED, REPRODUCED OR DISCLOSED TO ANY UNAUTHORIZED PERSON WITHOUT THE WRITTEN CONSENT OF CREE INC.

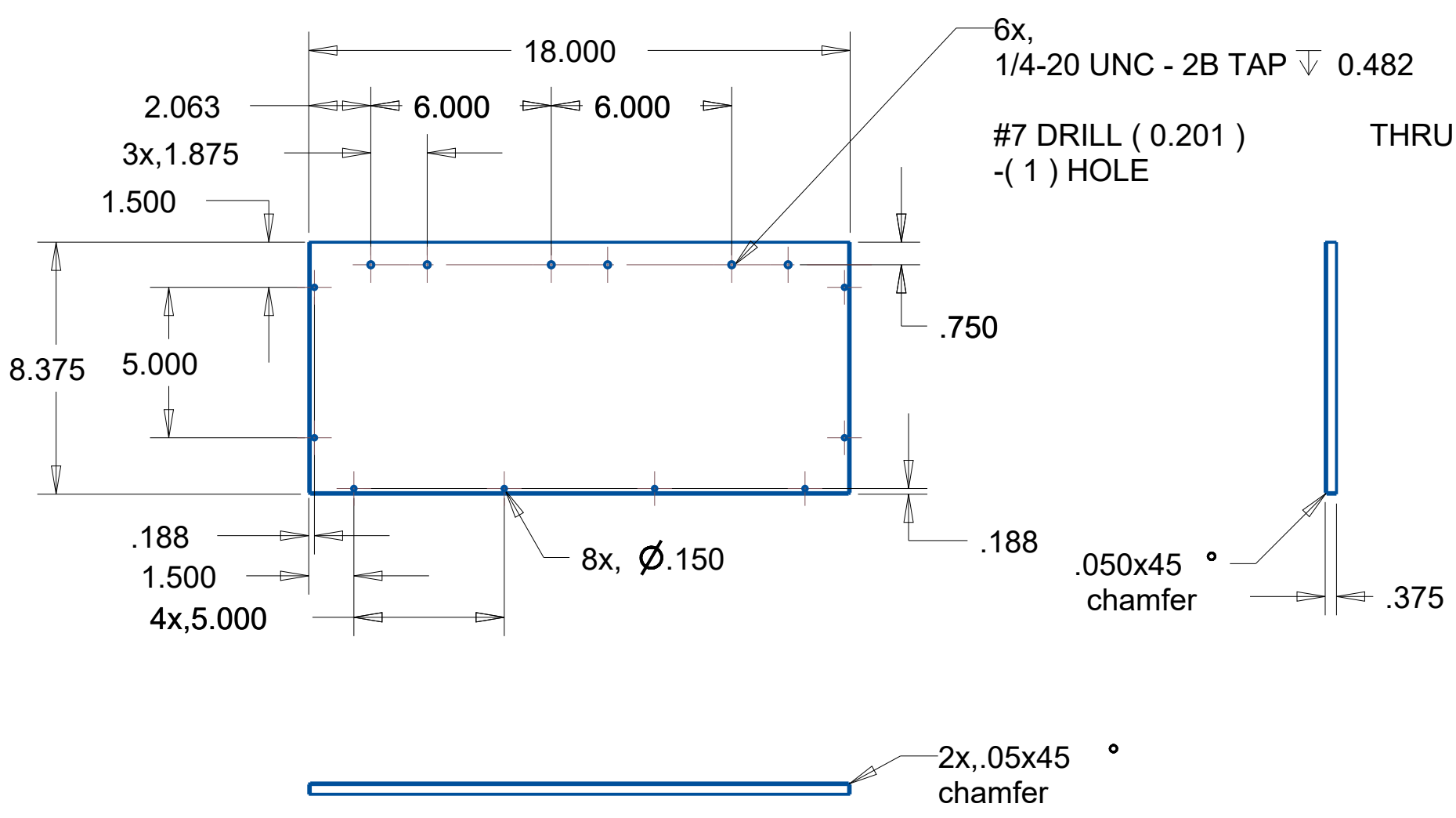
ITEM #05
 SCALE 0.200
 (#10 IS SAME AS #05 WITHOUT 2X, ϕ .15 HOLES)



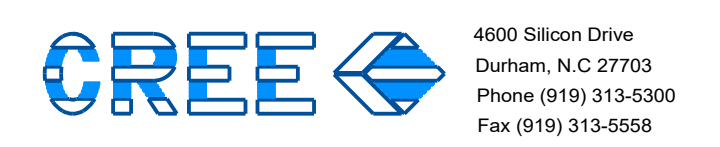
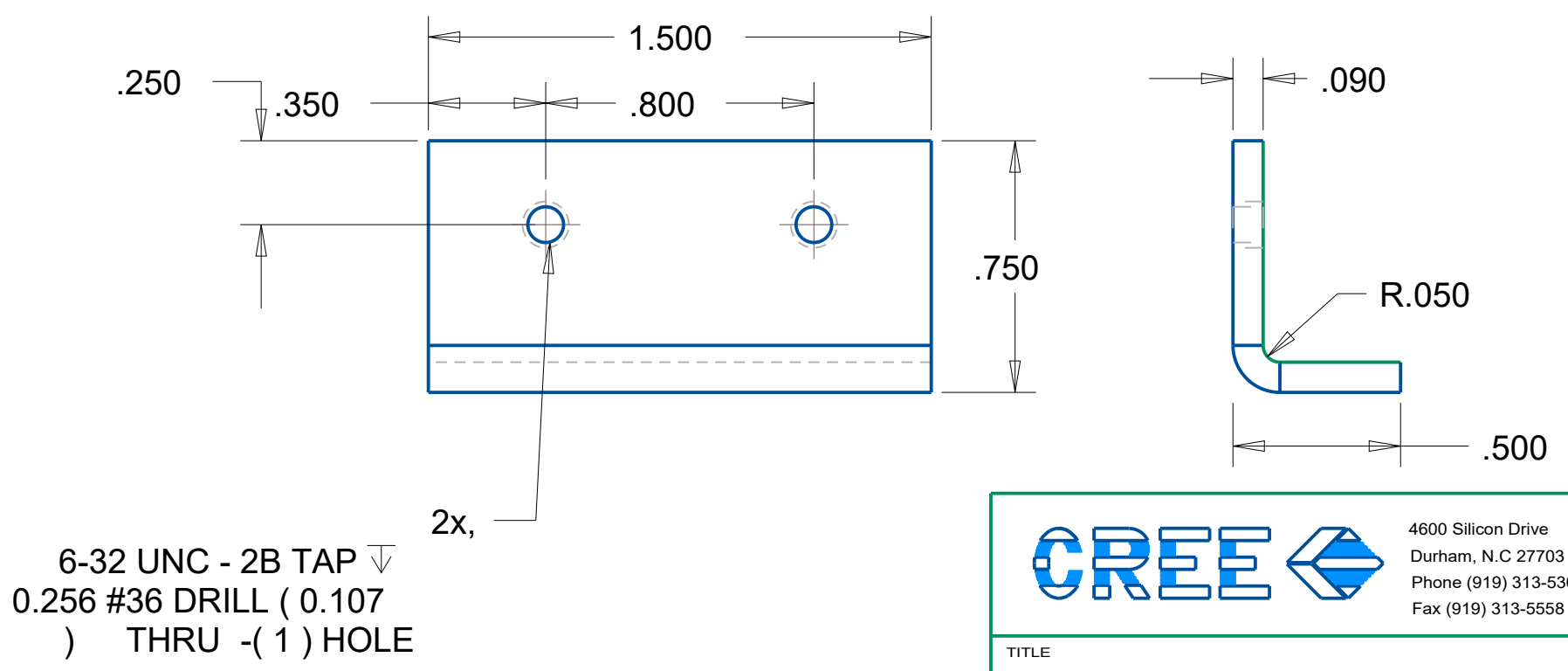
ITEM #06
 SCALE 0.200



ITEM #07
 SCALE 0.200



ITEM #08/W SS MATERIAL
 SCALE 2.000



TITLE
ENCLOSURE-DYNAMIC TEST

SIZE **C** DRAWING NO. **11001149** REV. **C**

SCALE 0.250 SHEET OF 3/3