

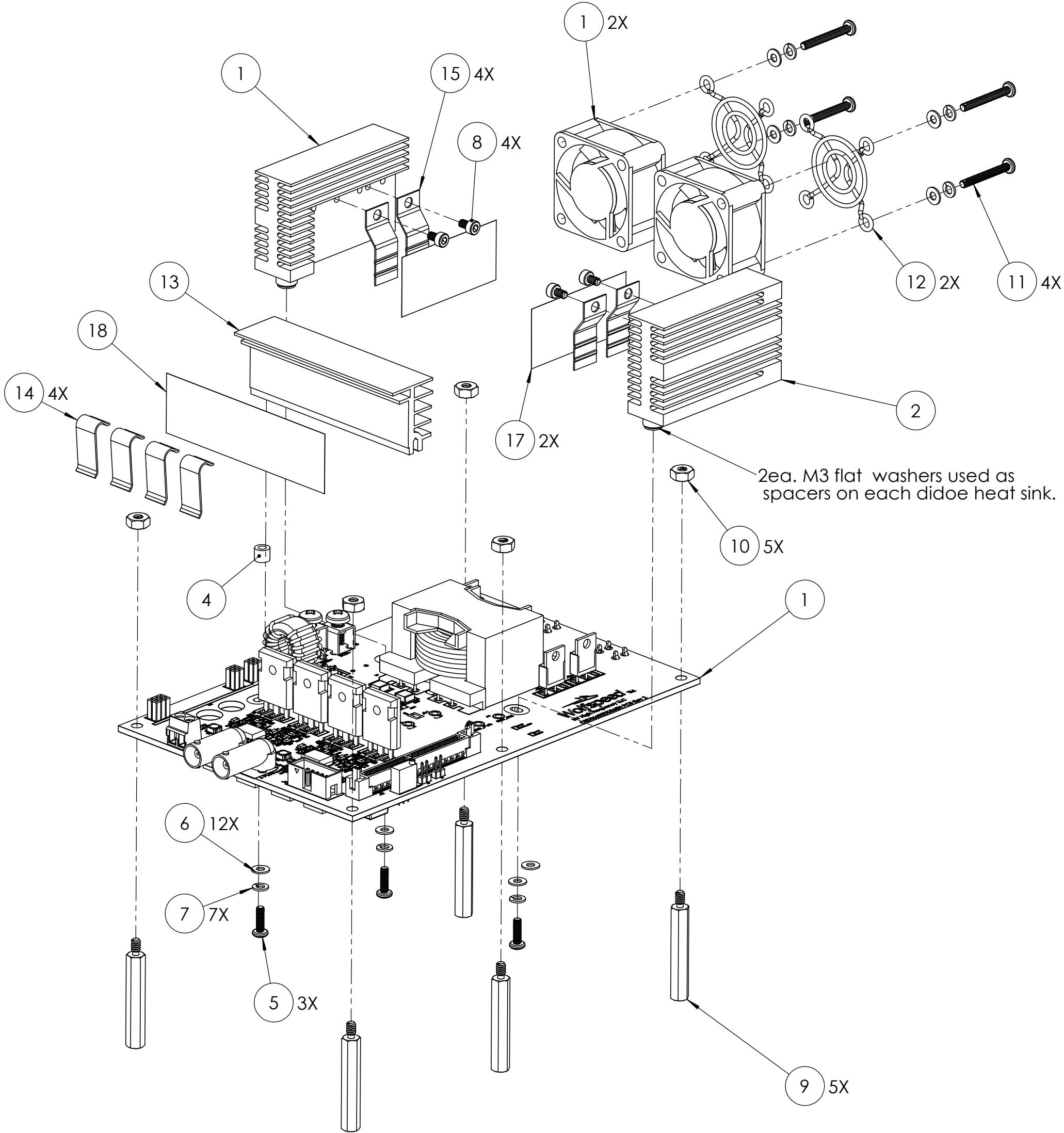
D

C

B

A

4			3	
Item	Qty Per	Description	Manufacturer Name	Manufacturer P/N
1	1	PCB Assembly	GRT	CRD06600DD065N
2	1	Diode Heat sink A (custom)	Adaptive Equipment	DIODE HS 1-2A_HV_MOD
3	1	Diode Heat sink B (custom)	Adaptive Equipment	DIODE HS 1-2B_HV_MOD
4	1	Aluminum Unthreaded Spacer, 6 mm OD, 5 mm Long	McMaster-Carr	94669A007
5	3	Steel Pan Head Phillips Screw, M3 x 0.5 mm Thread, 10 mm Long	McMaster-Carr	92005A120
6	12	Zinc-Plated Steel Washer for M3 Screw Size, 3.2 mm ID, 7 mm OD	McMaster-Carr	91166A210
7	7	Zinc-Plated Steel Split Lock Washer for M3 Screw Size, 3.4 mm ID, 6.2 mm OD	McMaster-Carr	91202A222
8	4	Zinc-Plated Alloy Steel Socket Head Screw, M3 x 0.5 mm Thread, 5 mm Long	McMaster-Carr	90128A187
9	5	Male-Female Threaded Hex Standoff, Nylon 6/6, 1/4" Hex Size, 1-1/2" Long, 6-32 to 6-32 Size Thread	McMaster-Carr	92745A348
10		Nylon Hex Nut, 6-32 Thread Size	McMaster-Carr	94812A300
11	4	Steel Pan Head Phillips Screw, M3 x 0.5 mm Thread, 35 mm Long	McMaster-Carr	92005A133
12	2	Steel Fan Guard for 1.57" (40 mm) Fan	McMaster-Carr	19155K91
13	1	MOSFET Heat Sink (cut to 85mm length)	Aavid	
14	4	Max Clip	Aavid	
15	4	MAX CLIP TO-220/MAX220 SCREW-MNT	Aavid	MAX07NG
16	3	Thermal interface, custom cut (85mm x 25mm)	Bergquist	
17	1	Thermal interfceace, custom-cut (52mm x 25mm)	Bergquist	
18				
19				
20				
21				



D

C

B

A

PROPRIETARY AND CONFIDENTIAL  
THE INFORMATION CONTAINED IN THIS DRAWING IS THE SOLE PROPERTY OF <INSERT COMPANY NAME HERE>. ANY REPRODUCTION IN PART OR AS A WHOLE WITHOUT THE WRITTEN PERMISSION OF <INSERT COMPANY NAME HERE> IS PROHIBITED.

UNLESS OTHERWISE SPECIFIED:		NAME	DATE
DIMENSIONS ARE IN INCHES		DRAWN	
TOLERANCES:		CHECKED	
FRACTIONAL: ±		ENG APPR:	
ANGULAR: MACH ± BEND ±		MFG APPR:	
TWO PLACE DECIMAL ±		Q.A.	
THREE PLACE DECIMAL ±		COMMENTS:	
INTERPRET GEOMETRIC TOLERANCING PER:			
MATERIAL			
FINISH			
DO NOT SCALE DRAWING			
NEXT ASSY	USED ON		
APPLICATION			

TITLE: CRD06600DD065N HV HF LLC Assembly		
SIZE C	DWG. NO.	REV
SCALE: 1:5	WEIGHT:	SHEET 1 OF 1