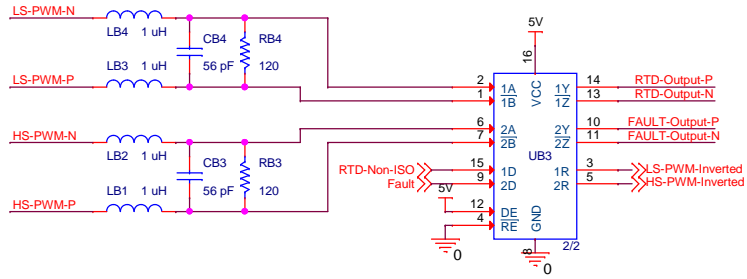
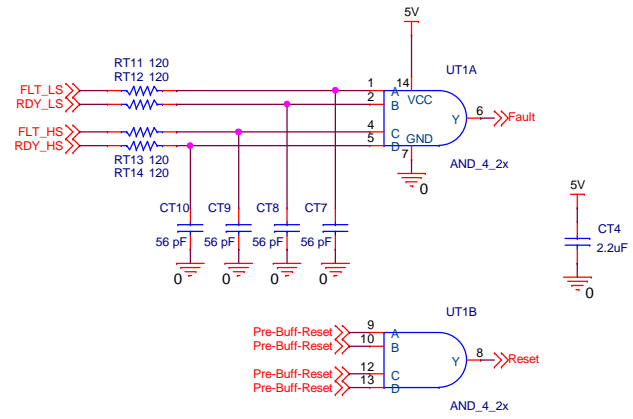


### DIFFERENTIAL TRANSCIEVER

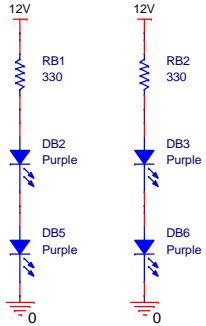


The default output of the differential transceiver is high if the inputs are left open. To ensure that the gate driver output is not driven high during this state, the positive and negative lines of the differential signal are flipped, which inverts the PWM signals.

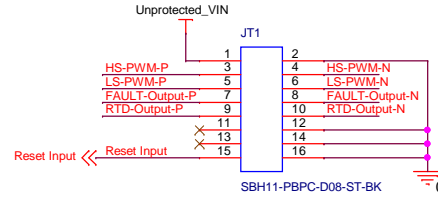
### FAULT COMBINATION





### UNDERGLOW



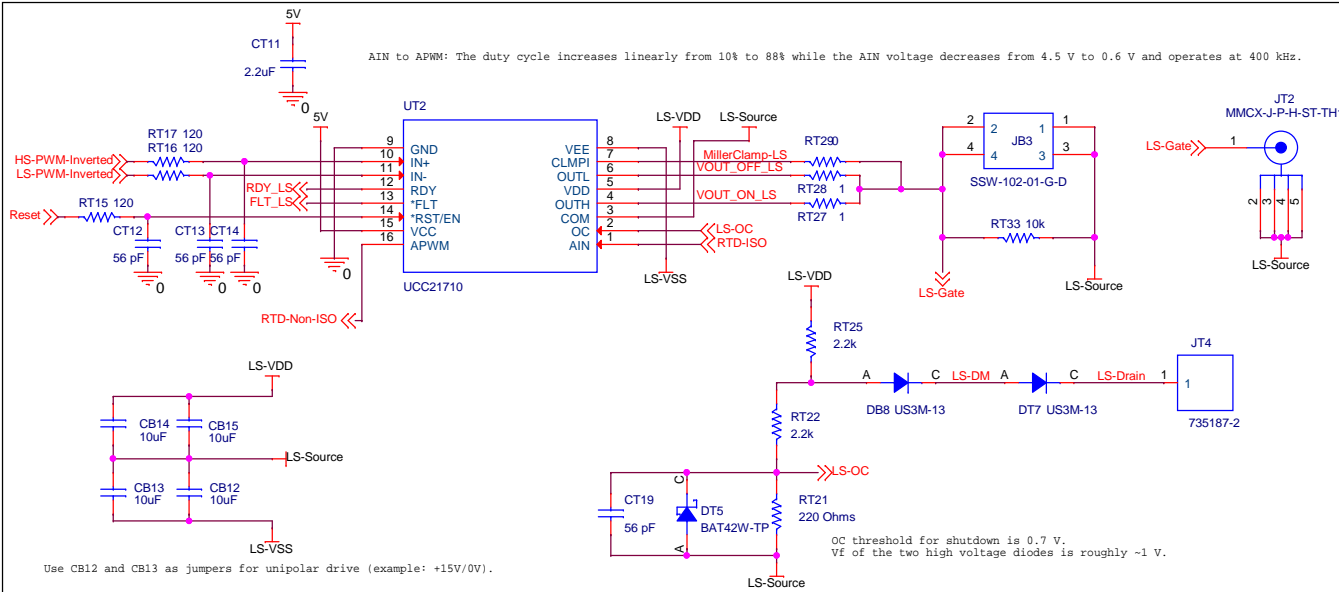
### I/O



Title I/O and Conditioning		
Size B	Document Number CGD1700HB2M-UNA	Rev V1
Date: Wednesday, January 06, 2021	Sheet 1	of 3

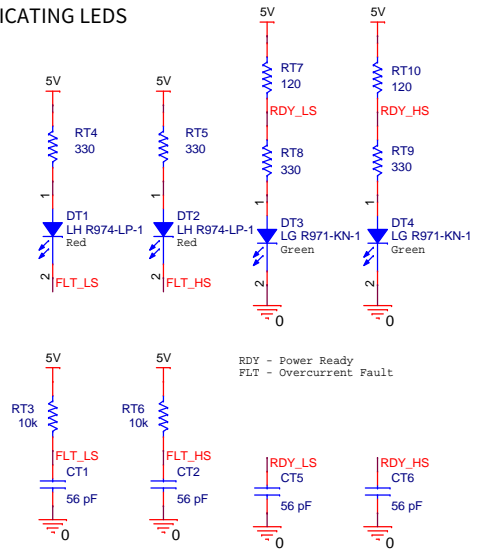
AIN to APWM: The duty cycle increases linearly from 10% to 88% while the AIN voltage decreases from 4.5 V to 0.6 V and operates at 400 kHz.



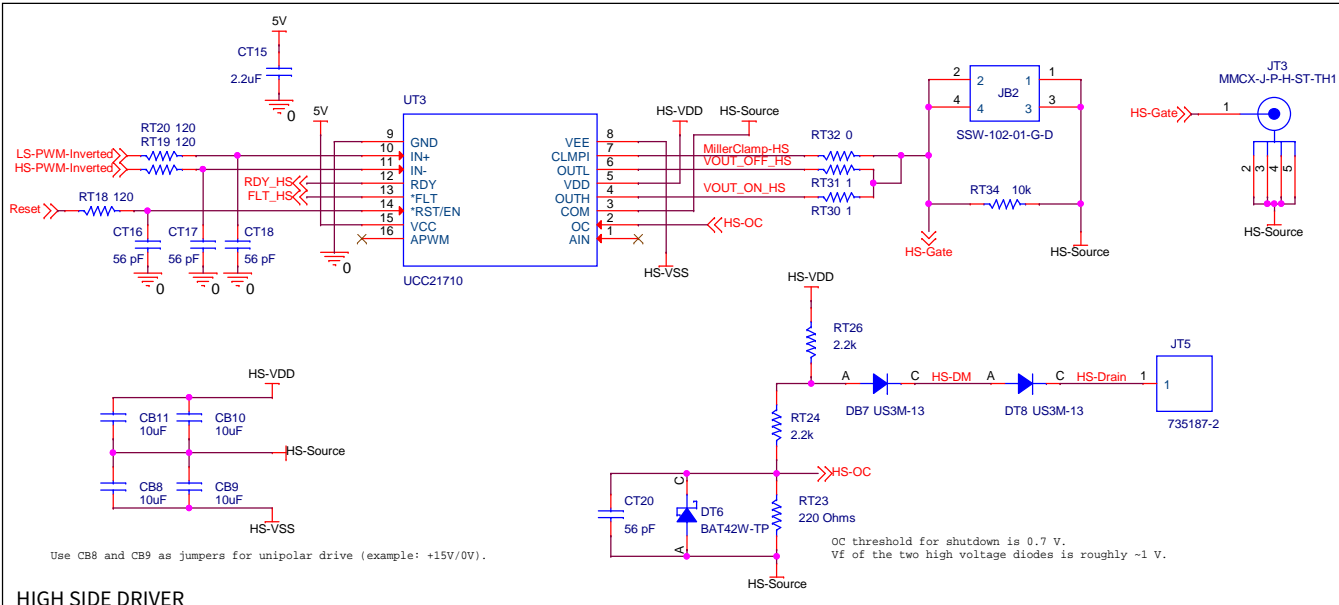
Use CB12 and CB13 as jumpers for unipolar drive (example: +15V/0V).

LOW SIDE DRIVER

FAULT INDICATING LEADS

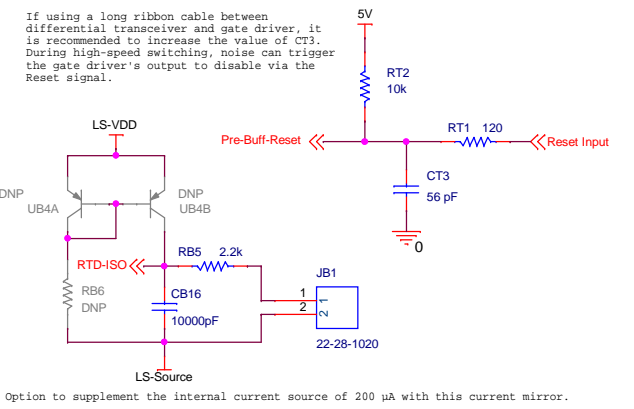


RDY - Power Ready  
FLT - Overcurrent Fault



Use CB8 and CB9 as jumpers for unipolar drive (example: +15V/0V).

HIGH SIDE DRIVER

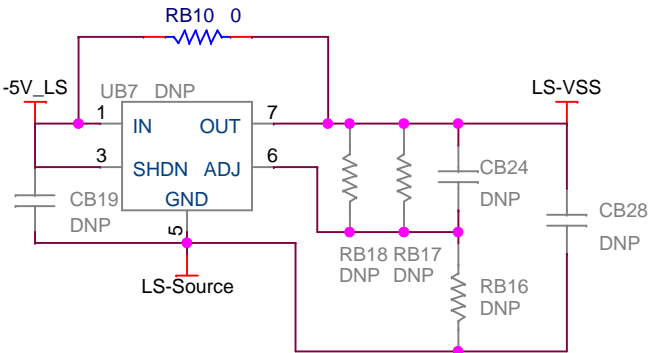
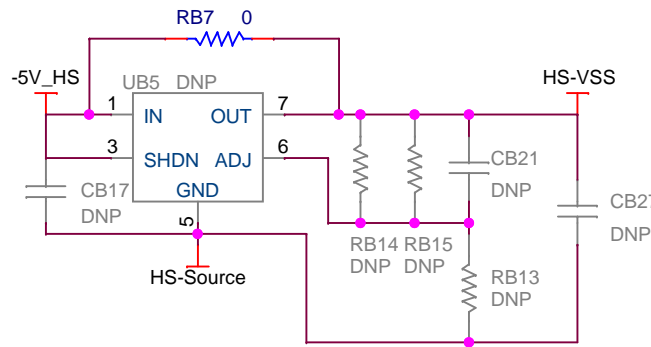


Option to supplement the internal current source of 200 uA with this current mirror.

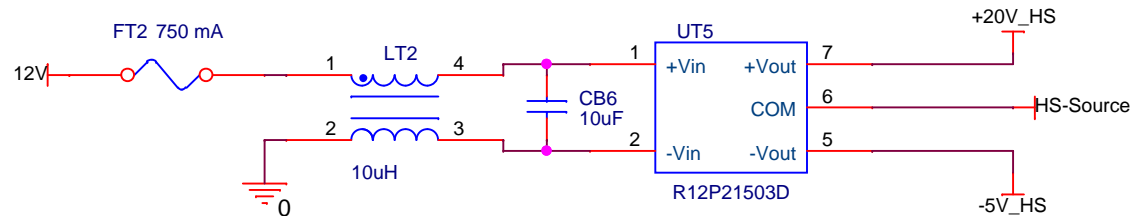


Title	Gate Drivers		
Size	Document Number CGD1700HB2M-UNA		
Date:	Wednesday, January 06, 2021	Sheet	2 of 3
		Rev	V1

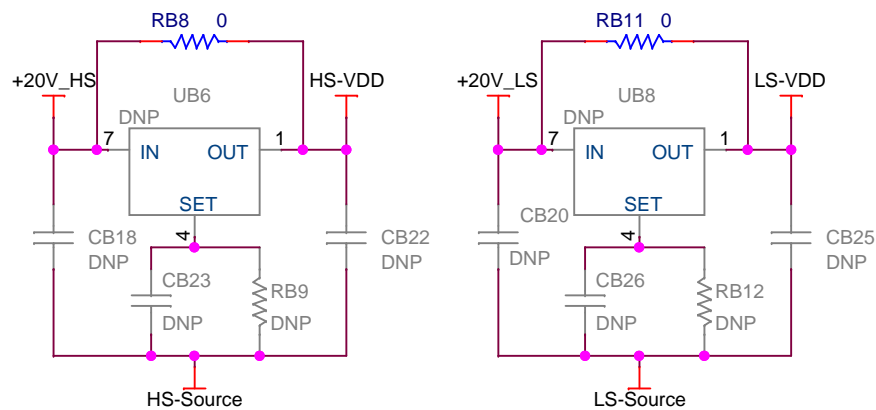
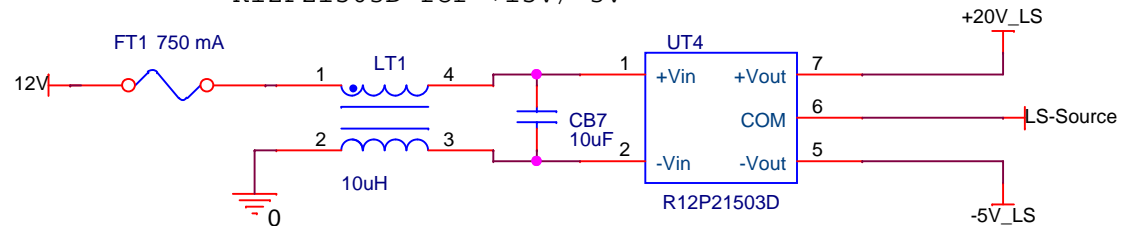
## Negative Regulators



## Isolated DC/DC Converters

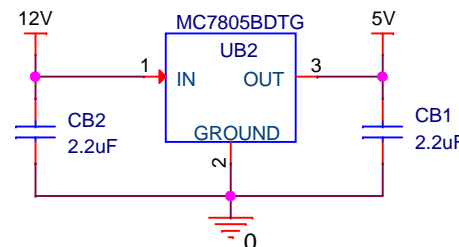


MGJ2D121505SC for +15V/-4V  
 MGJ2D122005SC for +20V/-5V or +18V/-5V  
 R12P21503D for +15V/-3V

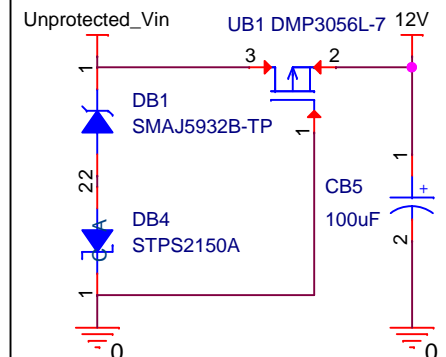


## Positive Regulators

## +5 V Primary Regulator



## Input Protection



**CREE**

**Wolfspeed**

Title Power Supplies

Size Document Number  
 A CGD1700HB2M-UNA

Rev V1

Date: Wednesday, January 06, 2021

Sheet 3 of 3